

ComDi-Clip slide closure Intended use

1. The maximum allowable temperature for the ComDi-Clip slide closure is 90° C. Therefore, please do not iron the slide closure!
2. You can see the maximum allowable bending of the ComDi-Clip slide closure **SV35** in Figure 1 and Figure 2. The ComDi-Clip slide closure can break if it is bent over the specified dimensions. For this, we assume no liability.



Figure 1: Sliding strip SV35 – maximum arch bending (7,5 cm)



Figure 2: Sliding strip SV35 – maximum reverse bending (straightened)

3. You can see the maximum allowable bending of the ComDi-Clip slide closure **SV55** in Figure 3 and Figure 4. The ComDi-Clip slide closure can break if it is bent over the specified dimensions. For this, we assume no liability.

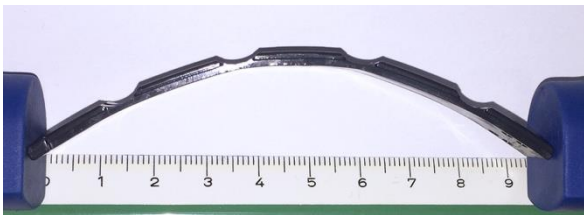


Figure 3: Sliding strip SV55 – maximum arch bending (9,5 cm)



Figure 4: Sliding strip SV55 – maximum reverse bending (straightened)

4. You can see the correct closing of the ComDi-Clip slide closure in Figure 5, Figure 6 and Figure 7.



Figure 5: Attach the sliding strip onto the slider



Figure 6: Clip the sliding strip into the slider



Figure 7: Correctly closed ComDi-Clip slide closure

Everything besides these applications is not admissible.